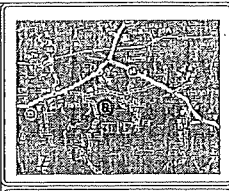


11/11/04  
 11/11/04  
 11/11/04

L1	1117.02'E	20.00'	L1	1117.02'E	20.00'
L2	1117.02'E	20.00'	L2	1117.02'E	20.00'
L3	1117.02'E	20.00'	L3	1117.02'E	20.00'
L4	1117.02'E	20.00'	L4	1117.02'E	20.00'
L5	1117.02'E	20.00'	L5	1117.02'E	20.00'
L6	1117.02'E	20.00'	L6	1117.02'E	20.00'
L7	1117.02'E	20.00'	L7	1117.02'E	20.00'
L8	1117.02'E	20.00'	L8	1117.02'E	20.00'
L9	1117.02'E	20.00'	L9	1117.02'E	20.00'
L10	1117.02'E	20.00'	L10	1117.02'E	20.00'
L11	1117.02'E	20.00'	L11	1117.02'E	20.00'
L12	1117.02'E	20.00'	L12	1117.02'E	20.00'
L13	1117.02'E	20.00'	L13	1117.02'E	20.00'
L14	1117.02'E	20.00'	L14	1117.02'E	20.00'
L15	1117.02'E	20.00'	L15	1117.02'E	20.00'
L16	1117.02'E	20.00'	L16	1117.02'E	20.00'
L17	1117.02'E	20.00'	L17	1117.02'E	20.00'
L18	1117.02'E	20.00'	L18	1117.02'E	20.00'
L19	1117.02'E	20.00'	L19	1117.02'E	20.00'
L20	1117.02'E	20.00'	L20	1117.02'E	20.00'
L21	1117.02'E	20.00'	L21	1117.02'E	20.00'
L22	1117.02'E	20.00'	L22	1117.02'E	20.00'
L23	1117.02'E	20.00'	L23	1117.02'E	20.00'
L24	1117.02'E	20.00'	L24	1117.02'E	20.00'
L25	1117.02'E	20.00'	L25	1117.02'E	20.00'
L26	1117.02'E	20.00'	L26	1117.02'E	20.00'
L27	1117.02'E	20.00'	L27	1117.02'E	20.00'
L28	1117.02'E	20.00'	L28	1117.02'E	20.00'
L29	1117.02'E	20.00'	L29	1117.02'E	20.00'
L30	1117.02'E	20.00'	L30	1117.02'E	20.00'
L31	1117.02'E	20.00'	L31	1117.02'E	20.00'
L32	1117.02'E	20.00'	L32	1117.02'E	20.00'
L33	1117.02'E	20.00'	L33	1117.02'E	20.00'
L34	1117.02'E	20.00'	L34	1117.02'E	20.00'
L35	1117.02'E	20.00'	L35	1117.02'E	20.00'
L36	1117.02'E	20.00'	L36	1117.02'E	20.00'
L37	1117.02'E	20.00'	L37	1117.02'E	20.00'
L38	1117.02'E	20.00'	L38	1117.02'E	20.00'
L39	1117.02'E	20.00'	L39	1117.02'E	20.00'
L40	1117.02'E	20.00'	L40	1117.02'E	20.00'
L41	1117.02'E	20.00'	L41	1117.02'E	20.00'
L42	1117.02'E	20.00'	L42	1117.02'E	20.00'
L43	1117.02'E	20.00'	L43	1117.02'E	20.00'
L44	1117.02'E	20.00'	L44	1117.02'E	20.00'
L45	1117.02'E	20.00'	L45	1117.02'E	20.00'
L46	1117.02'E	20.00'	L46	1117.02'E	20.00'
L47	1117.02'E	20.00'	L47	1117.02'E	20.00'
L48	1117.02'E	20.00'	L48	1117.02'E	20.00'
L49	1117.02'E	20.00'	L49	1117.02'E	20.00'
L50	1117.02'E	20.00'	L50	1117.02'E	20.00'
L51	1117.02'E	20.00'	L51	1117.02'E	20.00'
L52	1117.02'E	20.00'	L52	1117.02'E	20.00'
L53	1117.02'E	20.00'	L53	1117.02'E	20.00'
L54	1117.02'E	20.00'	L54	1117.02'E	20.00'
L55	1117.02'E	20.00'	L55	1117.02'E	20.00'
L56	1117.02'E	20.00'	L56	1117.02'E	20.00'
L57	1117.02'E	20.00'	L57	1117.02'E	20.00'
L58	1117.02'E	20.00'	L58	1117.02'E	20.00'
L59	1117.02'E	20.00'	L59	1117.02'E	20.00'
L60	1117.02'E	20.00'	L60	1117.02'E	20.00'
L61	1117.02'E	20.00'	L61	1117.02'E	20.00'
L62	1117.02'E	20.00'	L62	1117.02'E	20.00'
L63	1117.02'E	20.00'	L63	1117.02'E	20.00'
L64	1117.02'E	20.00'	L64	1117.02'E	20.00'
L65	1117.02'E	20.00'	L65	1117.02'E	20.00'
L66	1117.02'E	20.00'	L66	1117.02'E	20.00'
L67	1117.02'E	20.00'	L67	1117.02'E	20.00'
L68	1117.02'E	20.00'	L68	1117.02'E	20.00'
L69	1117.02'E	20.00'	L69	1117.02'E	20.00'
L70	1117.02'E	20.00'	L70	1117.02'E	20.00'
L71	1117.02'E	20.00'	L71	1117.02'E	20.00'
L72	1117.02'E	20.00'	L72	1117.02'E	20.00'
L73	1117.02'E	20.00'	L73	1117.02'E	20.00'
L74	1117.02'E	20.00'	L74	1117.02'E	20.00'
L75	1117.02'E	20.00'	L75	1117.02'E	20.00'
L76	1117.02'E	20.00'	L76	1117.02'E	20.00'
L77	1117.02'E	20.00'	L77	1117.02'E	20.00'
L78	1117.02'E	20.00'	L78	1117.02'E	20.00'
L79	1117.02'E	20.00'	L79	1117.02'E	20.00'
L80	1117.02'E	20.00'	L80	1117.02'E	20.00'
L81	1117.02'E	20.00'	L81	1117.02'E	20.00'
L82	1117.02'E	20.00'	L82	1117.02'E	20.00'
L83	1117.02'E	20.00'	L83	1117.02'E	20.00'
L84	1117.02'E	20.00'	L84	1117.02'E	20.00'
L85	1117.02'E	20.00'	L85	1117.02'E	20.00'
L86	1117.02'E	20.00'	L86	1117.02'E	20.00'
L87	1117.02'E	20.00'	L87	1117.02'E	20.00'
L88	1117.02'E	20.00'	L88	1117.02'E	20.00'
L89	1117.02'E	20.00'	L89	1117.02'E	20.00'
L90	1117.02'E	20.00'	L90	1117.02'E	20.00'
L91	1117.02'E	20.00'	L91	1117.02'E	20.00'
L92	1117.02'E	20.00'	L92	1117.02'E	20.00'
L93	1117.02'E	20.00'	L93	1117.02'E	20.00'
L94	1117.02'E	20.00'	L94	1117.02'E	20.00'
L95	1117.02'E	20.00'	L95	1117.02'E	20.00'
L96	1117.02'E	20.00'	L96	1117.02'E	20.00'
L97	1117.02'E	20.00'	L97	1117.02'E	20.00'
L98	1117.02'E	20.00'	L98	1117.02'E	20.00'
L99	1117.02'E	20.00'	L99	1117.02'E	20.00'
L100	1117.02'E	20.00'	L100	1117.02'E	20.00'

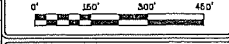


VICINITY MAP (NTS)

**NOTES & RESERVATIONS**

1. THIS PROPERTY IS SUBJECT TO ANY AND ALL RIGHT-OF-WAY, APPURTENANCES, RESTRICTIONS AND OR EASEMENTS IN EFFECT TO DATE.
2. ALL SET CORNERS ARE 1/2" x 1/8" STEEL REBAR WITH IDENTICAL CAP STAMPED SERIAL CLOSING P.L.S. #2011.
3. ADJOINING PROPERTY OWNERS ARE SHOWN ACCORDING TO PROPERTY RELATION OFFICE.
4. SURVEYOR HAS MADE NO INVESTIGATION OR INDEPENDENT SEARCH FOR EASEMENTS OF RECORD, ENCUMBRANCES, RESTRICTIVE COVENANTS, OWNERSHIP TITLE CURSORS OR ANY OTHER FACTS THAT AN ACCURATE AND CURRENT-TITLE SEARCH MAY DISCLOSE.

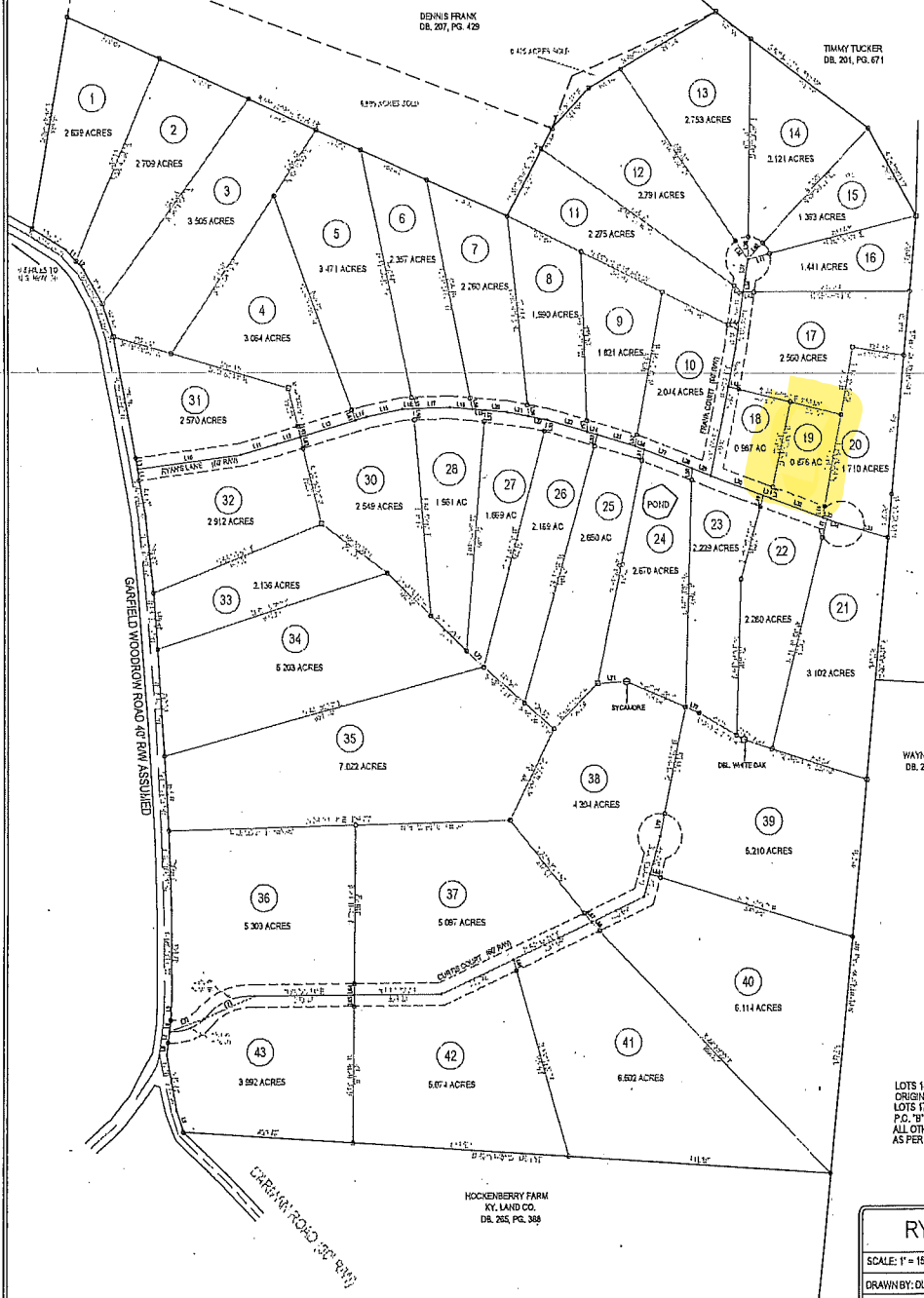
GRAPHIC SCALE



LEGEND

- 1/2" x 1/8" STEEL REBAR SET WITH CAP #2011
- STEEL REBAR FOUND
- CALCULATED MONITOR POINTS

**NOTE**  
 THE POINTS SHOWN ON THIS PLAN ARE THE CENTER POINTS OF ALL CURVES. THE POINTS SHOWN ON THIS PLAN ARE THE CENTER POINTS OF ALL CURVES.



**AMENDED PLAT NOTE:**  
 LOTS 1-16, 20, 30, 31 & 32 OF THIS PLAT REMAIN UNCHANGED FROM ORIGINAL PLAT RECORDED IN P.C. 'X', SLIDE 339.  
 LOTS 17, 18 & 19 WERE AMENDED ON PLAT RECORDED IN P.C. 'B', SLIDE 20.  
 ALL OTHER LOTS SHOWN HEREON ARE AMENDED OR NEW AS PER THIS PLAT.

SECOND (AMENDED RECORD PLAT OF)

<b>RYANS CREST SUBDIVISION</b>		
SCALE: 1" = 150'	SOURCE OF TITLE: DB. 181, PG. 388, DB. 182, PG. 411	
DRAWN BY: DLG	DATE: 03-02-04	BEARINGS: MAG 1998
PVA F:	LOCATION: GARFIELD	TOTAL AREA: 127.562 ACRES
APPROVED BY: KC	COUNTY - BRADSHIRE	PROJECT: RYANS CREST
DISTANCES: EDM	STATE - KENTUCKY	DRAWINGS NO.:

**SURVEYOR'S CERTIFICATION**

I HEREBY CERTIFY THAT THIS PLAT DEPICTS A SURVEY MADE BY ME OR UNDER MY DIRECT SUPERVISION BY THE METHOD OF RANDOM TRAVERSE. THIS SURVEY IS A CLASS "A" SURVEY AND MEETS ALL OF THE ACCURACY & PRECISION SPECIFICATIONS OF THIS CLASS. THE UNADJUSTED PRECISION RATIO OF CLOSURE IS 1:10,000 OR GREATER. THE ANGULAR AND LINEAR MEASUREMENTS HAVE NOT BEEN ADJUSTED FOR CLOSURE AND ARE CORRECT TO THE BEST OF MY KNOWLEDGE AND BELIEF.

FIELD DATE: \_\_\_\_\_

SIGNATURE: \_\_\_\_\_ DATE: \_\_\_\_\_

**CLEMONS & ASSOCIATES**  
 LAND SURVEYING, INC.

101 SOUTH CLINTON STREET  
 LITCHFIELD, KENTUCKY 42754  
 PH (270) 258-5884 - FAX (270) 258-6874  
 EMAIL: hards@clemonsandassociates.com